

# Decal Installation Instructions

\* Please read in full prior to installation

Your decal arrives sandwiched between two layers. The top layer is a clear transfer layer. The bottom layer is a silicone lined piece of paper.

Things you will need:



Cleaning Pad (provided)    Painter's Tape    Scissors    Application Tool (provided)



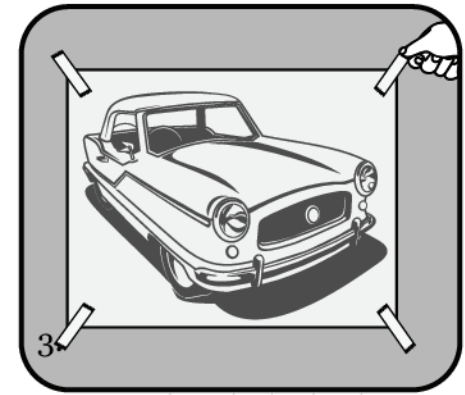
1.

Clean surface using provided alcohol pad or mild cleaner. Allow to dry.



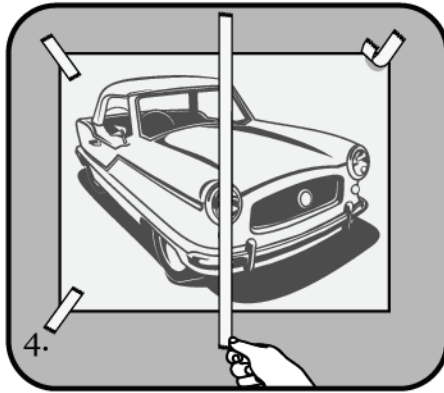
2.

Allow decal to relax if rolled up. On a flat surface, rub over top with light pressure to flatten.



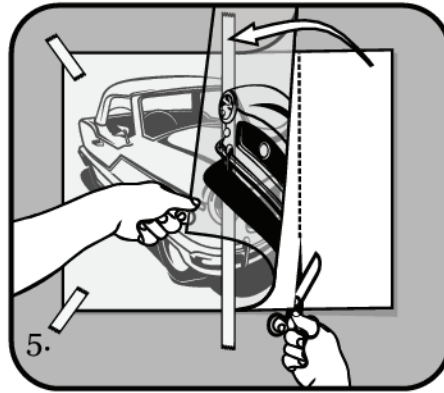
3.

Position your decal where you want it then tape the corners with painter's tape.



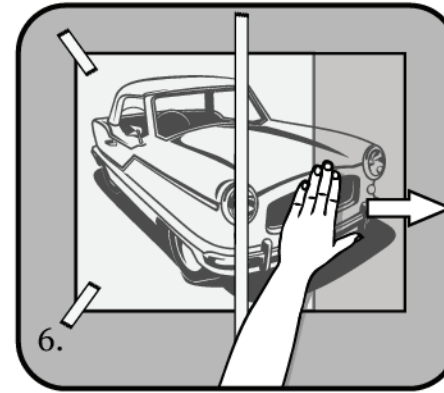
4.

Tape the decal to the wall with a strip of tape across the middle then remove tape pieces from one side.



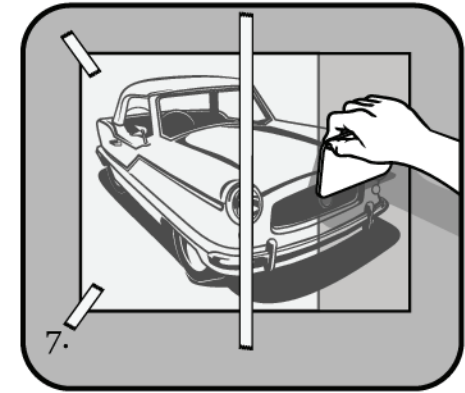
5.

Peel back one side of the transfer tape ensuring all parts of decal sticks. Cut away the exposed paper.



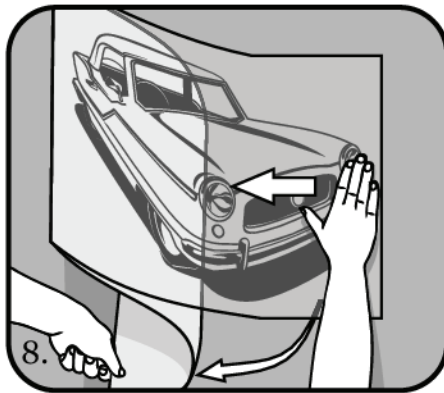
6.

Working from center out to edges, smooth the transfer tape to your surface. Avoid bubbles and wrinkles.



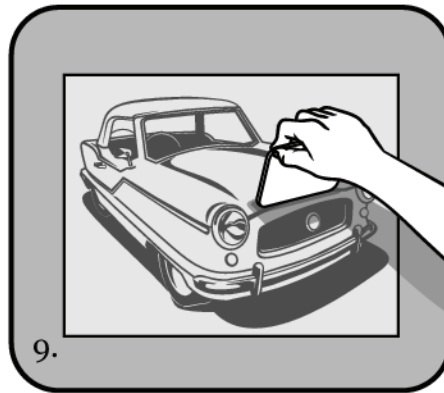
7.

Using application tool, go over what you just applied from center out. Carefully remove any bubbles.



8.

Remove tape strip and tape corners. Lift other side of decal up and carefully remove the paper backing. From center out, lay transfer layer.



9.

Using application tool, firmly rub across entire decal. Pay attention to ensure you rub over tiny parts and thin lettering.



10.

Starting from one corner, slowly remove the transfer layer. Do not peel any part of the decal away from your surface.



11.

Using a soft cloth you can lightly apply pressure to remove any bubbles. You can also use a pin to poke the bubbles to release air.